



90%
**LESS THROMBUS
ACCUMULATION**
COMPARED TO
UNCOATED CATHETERS
(based on platelet count)*



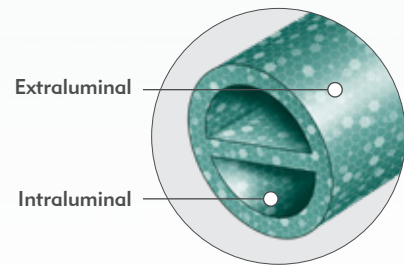
DuraMax® Hemodialysis Catheter

Proven to Reduce Thrombus Accumulation, In Vitro[†]

The BioFlo™ DuraMax® Catheter is the first dialysis catheter with Endexo® Technology, providing a catheter material more resistant to in-vitro thrombus accumulation, compared to commonly used catheters (based on platelet count).[†]

The BioFlo DuraMax Catheter provides long term access to the peripheral venous system for hemodialysis sessions. The BioFlo DuraMax Catheter features Endexo Technology which is present throughout the entire blood pathway including the intraluminal and extraluminal surfaces of the catheter.

- BioFlo DuraMax dialysis catheter has 84% less thrombus accumulation on its surface in-vitro compared to non-coated Palindrome chronic dialysis catheters (based on platelet count).[†]



BioFlo DuraMax Catheter with Endexo Technology

83.5%
LESS THROMBUS ACCUMULATION

Compared to Palindrome H Chronic Dialysis Catheter (based on platelet count)[†]

BioFlo DuraMax Catheter with Endexo Technology



Catheter has minimal visible thrombus, fibrin sheath, or clot.

SEM Image (Scanning Electron Microscopy)

BioFlo DuraMax Dialysis Catheter with Endexo Technology at 10x magnification

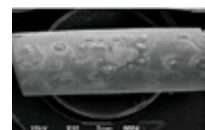


Palindrome™ H Chronic Dialysis Catheter



SEM Image (Scanning Electron Microscopy)

Palindrome H Chronic Dialysis Catheter at 10x Magnification



[†]The reduction in thrombus accumulation (based on platelet count) is supported by acute in-vitro benchtop testing performed up to two hours using bovine blood. Pre-clinical in-vitro evaluations do not necessarily predict clinical performance with respect to thrombus formation. Data on file.

BioFlo DuraMax Catheter

Thermoplastic polyurethane luers
combine toughness, dimensional stability, and chemical resistance

Curved Tip Catheter
TECHNOLOGY

Curved Tip catheter technology reduces vein wall apposition and risk of arterial insufficiency. 3 cm tip stagger reduces recirculation rates



15.5F BioFlo DuraMax Catheter facilitates high flow rates at modest arterial pressures. Proprietary lumen, kink-resistant design

Clear extension tubes for early visualization of blood return

Patented angled venous tip and guidewire lumen design positions guidewire in the center of the leading edge of distal tip and provides over-the-wire performance and ease of insertion

BioFlo DuraMax Catheter

Advanced features, such as large lumen diameters and thrombus reduction Endexo technology allow the BioFlo DuraMax Catheter to deliver high flow rates at modest pressures.

BIOFLO DURAMAX CATHETER

30.3%

REDUCTION IN PRESSURE

Compared to Palindrome™ Chronic Dialysis Catheter

Average Pressure vs. Flow Rates

Pressure at Flow (mm Hg)

Length	200 ml/min		300 ml/min		400 ml/min	
	A	V	A	V	A	V
24 cm	-53	54	-73	84	-120	128
28 cm	-59	59	-86	90	-135	134
32 cm	-60	64	-92	97	-144	143
40 cm	-66	72	-107	108	-164	157
55 cm	-83	86	-133	127	-197	179

Data on File

Competitive Kit Offerings for Patient Care

BioFlo DuraMax Catheters are available in a variety of options for safe and reliable insertion.

ORDERING INFORMATION

Catalog Number	Catheter Length	Tip-to-cuff
----------------	-----------------	-------------

DUAL VALVE BASIC KIT

H965103028011†	20 cm	15 cm
H965103028021	22 cm	17 cm
H965103028031	24 cm	19 cm
H965103028041	28 cm	23 cm
H965103028051	32 cm	27 cm
H965103028061	36 cm	31 cm
H965103028070*	40 cm	35 cm
H965103028080*	48 cm	43 cm
H965103028090*	55 cm	50 cm

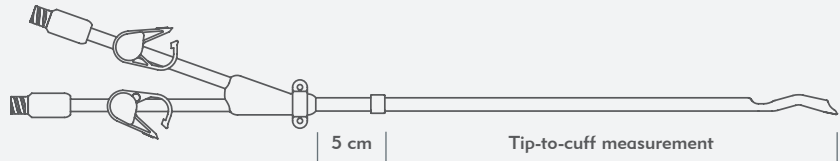
DUAL VALVE VASCPAK

H965103028161†	20 cm	15 cm
H965103028171†	22 cm	17 cm
H965103028181	24 cm	19 cm
H965103028191	28 cm	23 cm
H965103028201	32 cm	27 cm
H965103028211	36 cm	31 cm
H965103028220*	40 cm	35 cm
H965103028230*	48 cm	43 cm
H965103028240*	55 cm	50 cm

SINGLE VALVE BASIC

H965103038011†	20 cm	15 cm
H965103038021	22 cm	17 cm
H965103038031	24 cm	19 cm
H965103038041	28 cm	23 cm
H965103038051	32 cm	27 cm
H965103038061	36 cm	31 cm
H965103038070*	40 cm	35 cm
H965103038080*	48 cm	43 cm
H965103038090*	55 cm	50 cm

Catheter Length Measurement (not drawn to scale)



Catalog Number	Catheter Length	Tip-to-cuff
----------------	-----------------	-------------

SINGLE VALVE VASCPAK

H965103038161†	20 cm	15 cm
H965103038171†	22 cm	17 cm
H965103038181	24 cm	19 cm
H965103038191	28 cm	23 cm
H965103038201	32 cm	27 cm
H965103038211	36 cm	31 cm
H965103038220*	40 cm	35 cm
H965103038230*	48 cm	43 cm
H965103038240*	55 cm	50 cm

CATHETER ONLY

H965103029011†	20 cm	15 cm
H965103029021†	22 cm	17 cm
H965103029031	24 cm	19 cm
H965103029041	28 cm	23 cm
H965103029051	32 cm	27 cm
H965103029061†	36 cm	31 cm
H965103029071**	40 cm	35 cm
H965103029081**	48 cm	43 cm
H965103029091**	55 cm	50 cm

†This item is made to order | Packaged 1 unit per box.
5 units per carton. | *1 unit per carton.

KIT CONFIGURATIONS INCLUDE:

BASIC KIT

- 1-BioFlo DuraMax Hemodialysis Catheter
- 2-Injection Caps
- 1-Adhesive Wound Dressing
- 1-16F Valved Peelable Introducer Sheath
- 1-12F Vessel Dilator
- 1-14F Vessel Dilator
- 1-Tri-Ball Tunneled with Sleeve
- 1-0.038" J/Flex Guidewire
- 1-18G x 2 3/4" Introducer Needle
- 1-#11 Blade Safety Scalpel.

VASCPAK® KIT

- 1-BioFlo DuraMax Hemodialysis Catheter
- 2-Injection Caps
- 1-Adhesive Wound Dressing
- 1-16F Valved Peelable Introducer Sheath
- 1-12F Vessel Dilator
- 1-14F Vessel Dilator
- 1-Tri-Ball Tunneled with Sleeve.

CATHETER ONLY KIT

- 1-BioFlo DuraMax Hemodialysis Catheter
- 2-Injection Caps.

Consult your Merit Medical representative for country specific product availability.

Before using refer to Instructions for Use for indications, contraindications, warnings, precautions, and directions for use.



Understand. Innovate. Deliver.™

merit.com

Merit Medical Systems, Inc.
1600 West Merit Parkway
South Jordan, Utah 84095
1.801.253.1600
1.800.35.MERIT

Merit Medical Europe, Middle
East & Africa (EMEA)
Amerikalaan 42, 6199 AE
Maastricht-Airport
The Netherlands
+31 43 358 82 22

Merit Medical Ireland Ltd.
Parkmore Business Park West
Galway, Ireland
+353 (0) 91 703 733